



Computer Configuration for using the Fantasyland Hotel Broadband Internet Services

Table of Contents

Table of Contents.....	1
Computer Configuration for using the Fantasyland Hotel Broadband Internet Services	1
Before you hook up your equipment	2
Configuring your computer	3
Single or non-networked computers	3
If you require connecting to other computers or devices as well as the Internet.....	3
Additional Considerations	5
Location of Ethernet Jacks at the Fantasyland Hotel.....	6
Request for Technical Assistance	6



The Fantasyland Hotel has provisioned all of our banquet and conference facilities with High-Speed Broadband Internet Service. We want to ensure that your function goes smoothly by providing you with basic information when connecting your equipment to our broadband services.

Before you hook up your equipment

- Insure that your computer equipment is in good operating order and has connected to the Internet immediately prior to using the facilities at Fantasyland Hotel.
- Your computer equipment must have a network adapter installed and properly configured before connecting it to the Fantasyland Hotel network.
- Check the settings of your computer's operating system to confirm that you have the TCP/IP protocol installed and properly configured for your equipment. If you are unsure on how to check this please contact your Information Technology support staff in advance of your event.
- Your equipment should be in good repair and have all required adapter cables. If the network jack or the adapter on your equipment is damaged, replace the damaged parts before attempting to hook-up your equipment to the Fantasyland Hotel network.
- Your network adapter must be compatible with a 10/100 Ethernet connection, and use a RJ45 patch cable. Again, if you are uncertain please contact your Information Technology support staff in advance of your event.
- Do not hook-up any network equipment such as a router or wireless access point that is still configured with default settings. Many of these types of devices use the same default IP address. **Duplicate addresses will cause disruptions on any network including the Fantasyland Hotel network.**
- Do not attempt to use a network device or computer that is a DHCP *server*. Most computer equipment is configured as a DHCP *client*, which is the preferred IP addressing setup and should not be confused with being a DHCP *server*. Disable or turn off the DHCP *server* service before attaching the device. If you are unsure if your equipment has a DHCP *server* or how to disable this function, please contact your Information Technology support staff in advance of your event.

Please review the instructions below under ***Configuring Your Computer*** then simply attached the RJ45 patch cord supplied by the banquet staff to the Ethernet network jack on your computer. If you are trying to locate the room's Ethernet jack, it is located in the black faceplate under the whiteboard in the conference rooms. In the ballrooms and hallways the jack is also located in a black faceplate and is identified with a light blue colour bar over the RJ-45 jack. Some of the Ballroom jacks may also

Computer Configuration for using the Fantasyland Hotel Broadband Internet Services

have a telephone jack that has a light green colour bar. The Banquet staff will gladly assist you in locating the nearest Ethernet jack. Please review the Floor Plan drawing at the end of this document for further information.

Configuring your computer

Single or non-networked computers

We recommend the following configuration procedures, as they will improve the reliability of your Internet connection on the Fantasyland Hotel network:

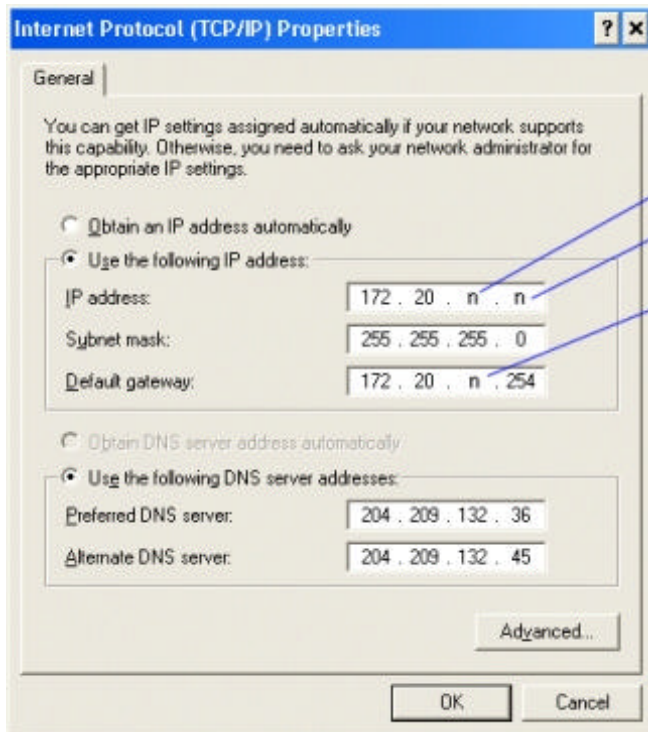
- Change your TCP/IP settings to use DHCP to supply your IP address. *Most likely your computer is already configured to use DHCP. If you are unsure of your settings, contact your Information Technology support staff in advance of this event.*
- Start your computer AFTER you have attached the patch cable to the wall jack and your equipment. Windows XP and Windows 2000 computers configure to our network better if they are started with a network link already established. If you connect the network cable after a Windows XP computer has already been started there may be a considerable delay before Windows XP will recognize and connect to our network due to both the operating system and our network equipment attempting to auto-configure to each other's settings.
- Our network will insure that all computers using DHCP will be isolated from each other, even if they are in the same room or attached to the same hub or switch.

If you require connecting to other computers or devices as well as the Internet

- If you will be using a Peer to Peer network group, or need to communicate with a local server or network device then you cannot use DHCP. Instead, all of your network devices and computers will have to use Static IP Addresses.
- The IP address you assign to your equipment should be based on the banquet room you are in. Please use the following table.

Computer Configuration for using the Fantasyland Hotel Broadband Internet Services

Banquet Room	Starting IP Address	Ending IP Address	Subnet Mask	Default Gateway	Server Address
Ballroom A	172.20.0.1	172.20.0.252	255.255.255.0	172.20.0.254	172.20.0.253
Ballroom B	172.20.1.1	172.20.1.252	255.255.255.0	172.20.1.254	172.20.1.253
Ballroom C	172.20.2.1	172.20.2.252	255.255.255.0	172.20.2.254	172.20.2.253
Ballroom D	172.20.3.1	172.20.3.252	255.255.255.0	172.20.3.254	172.20.3.253
Ballroom E	172.20.4.1	172.20.4.252	255.255.255.0	172.20.4.254	172.20.4.253
5 Piesporter	172.20.5.1	172.20.5.252	255.255.255.0	172.20.5.254	172.20.5.253
6 Chianti	172.20.6.1	172.20.6.252	255.255.255.0	172.20.6.254	172.20.6.253
7 Medeira	172.20.7.1	172.20.7.252	255.255.255.0	172.20.7.254	172.20.7.253
9 Bordeaux	172.20.9.1	172.20.9.252	255.255.255.0	172.20.9.254	172.20.9.253
10 Beaujolais	172.20.10.1	172.20.10.252	255.255.255.0	172.20.10.254	172.20.10.253
11 Chardonnay	172.20.11.1	172.20.11.252	255.255.255.0	172.20.11.254	172.20.11.253
12 Chablis	172.20.12.1	172.20.12.252	255.255.255.0	172.20.12.254	172.20.12.253
14 Medoc	172.20.14.1	172.20.14.252	255.255.255.0	172.20.14.254	172.20.14.253
15 Cognac	172.20.15.1	172.20.15.252	255.255.255.0	172.20.15.254	172.20.15.253
16 Champagne	172.20.16.1	172.20.16.252	255.255.255.0	172.20.16.254	172.20.16.253



In order to ensure assignment of Unique IP addresses we recommend that you use the room number as part of the IP address assignment.

The 3rd octet would be assigned the room number.

The 4th octet would be assigned the device number.

Assign the room number to the 3rd octet of the default gateway or ensure the device and gateway are within the same subnet.

As long as the Default gateway is setup you do not need to setup the DNS servers.

- If you are using a Server, make sure you assign it the appropriate server address from the table. If you do not have a designated server, make sure that one of your computers is assigned the Server IP address.
- You must assign a default gateway. Do not leave this field blank in your IP configuration. Our network switch will “spoof” your static IP address, but it

Computer Configuration for using the Fantasyland Hotel Broadband Internet Services

cannot spoof a blank default gateway. If you are using a DHCP IP address, the switch will automatically assign a default gateway.

- This configuration will allow all the network devices in the same room to communicate with each other, and allow access to the Internet. It also insures that all rooms are isolated from each other.
- If you require network access between rooms, use the lowest IP address range of your rooms for ALL the devices that are required to be networked.
- **Please ensure you do not have duplicate IP addresses.** We suggest marking the equipment with the assigned IP address to insure there are no duplicate addresses.
- If a proxy server is being used in your LAN design, please ensure that you have disabled DHCP services on the network port that is connecting your proxy server to our network and that you have properly assigned the IP address and gateway address for this port.

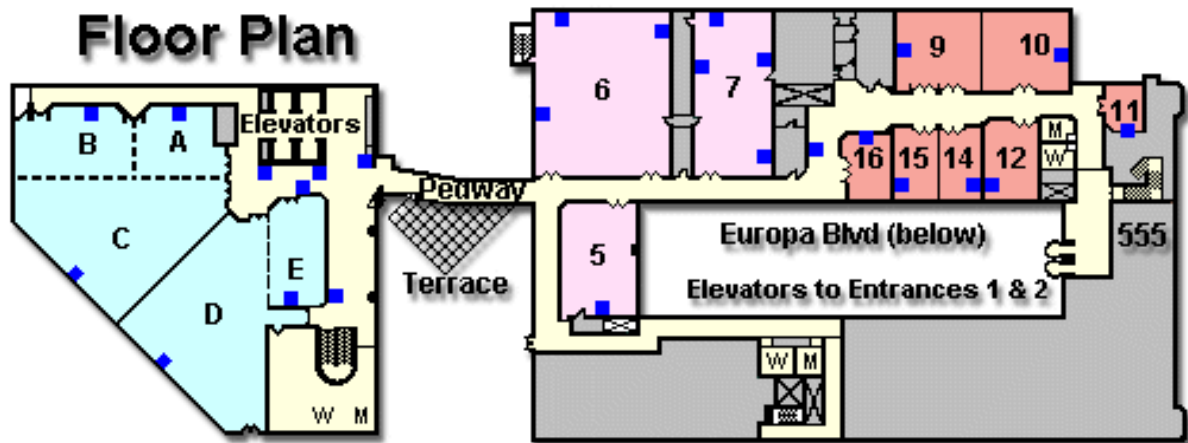
Additional Considerations

Do not use a connector splice or any passive device to increase the length of the patch cord supplied by the Banquet staff. Instead, request a longer cord from the staff, or use an active device such as a hub or switch. Attempting to use a connector splice or passive device will result in disruptions to your Internet service and can potentially disrupt services provided to other broadband users.

The Ethernet jacks in each conference room are normally disabled. The hotel's banquet personnel are capable of activating the Ethernet jacks in the rooms where connectivity is needed provided your contract specifies the provisioning of High-Speed Broadband Internet. Please ensure your catering consultant has been advised of your Broadband Internet requirements.

Location of Ethernet Jacks at the Fantasyland Hotel

Below is a floor plan diagram depicting the approximate locations of all network RJ45 Ethernet Jacks (blue squares) in the conference and convention facilities at the Fantasyland Hotel:



Request for Technical Assistance

If you require assistance from the Hotel I.T. department with setting up Broadband Internet Connectivity our Hotel would gladly assist you in engaging the services of the Hotel's I.T. department. These services are billable and must be booked at least two weeks prior to your event. Please speak to your Catering consultant for further information.